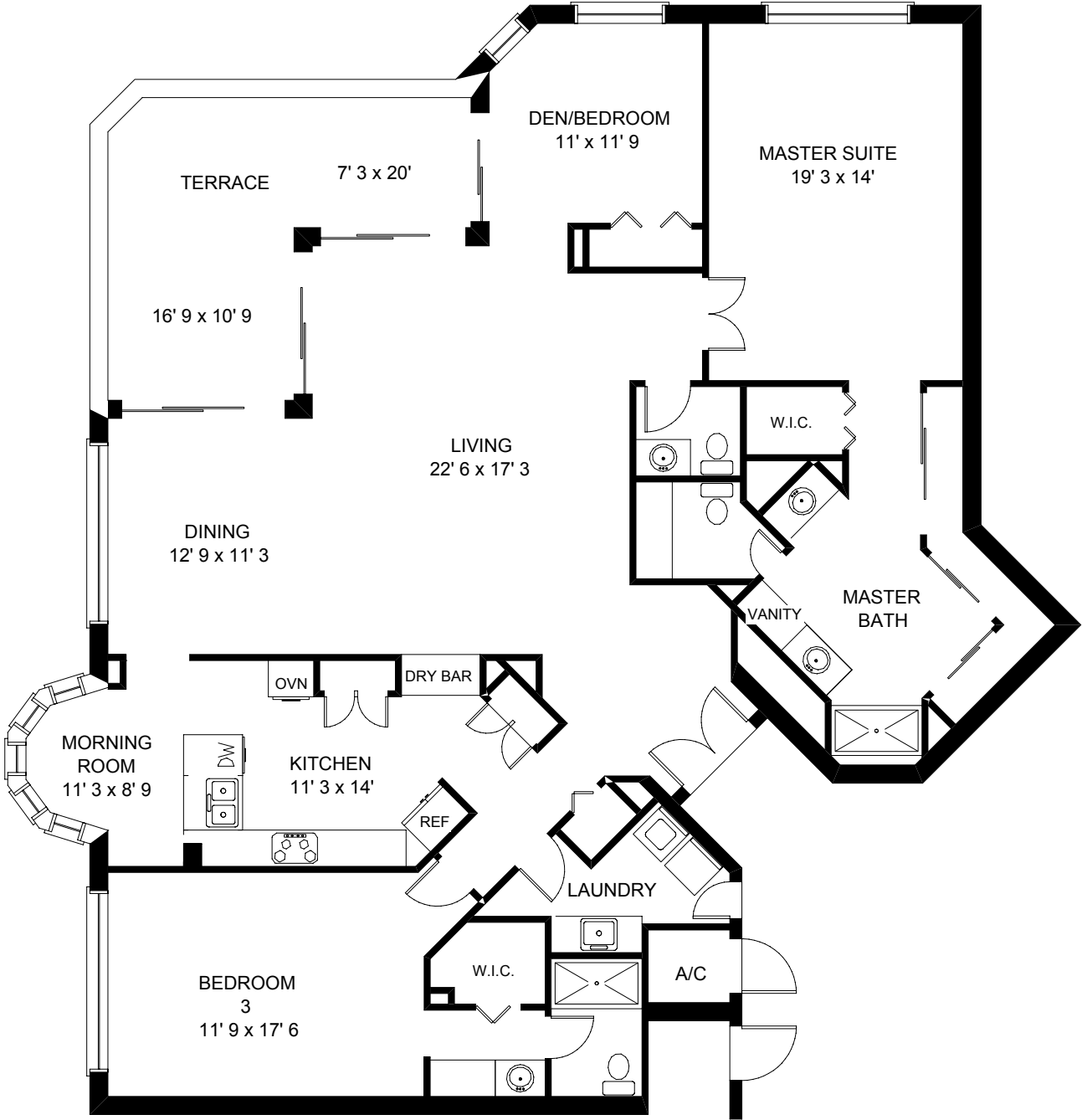


**PARK SHORE TOWERS**  
**UNIT #19C**  
**4251 GULF SHORE BOULEVARD NORTH**  
**NAPLES, FL**



TOTAL UNDER AIR	2372 sq. ft.
Covered Terrace	238 sq. ft.
<hr/>	
TOTAL AREA	2610 sq. ft.

PRECISION FLOORPLANS, INC.  
 239 - 598 - 9411

ALL INFORMATION IS DEEMED  
 RELIABLE BUT NOT  
 GUARANTEED