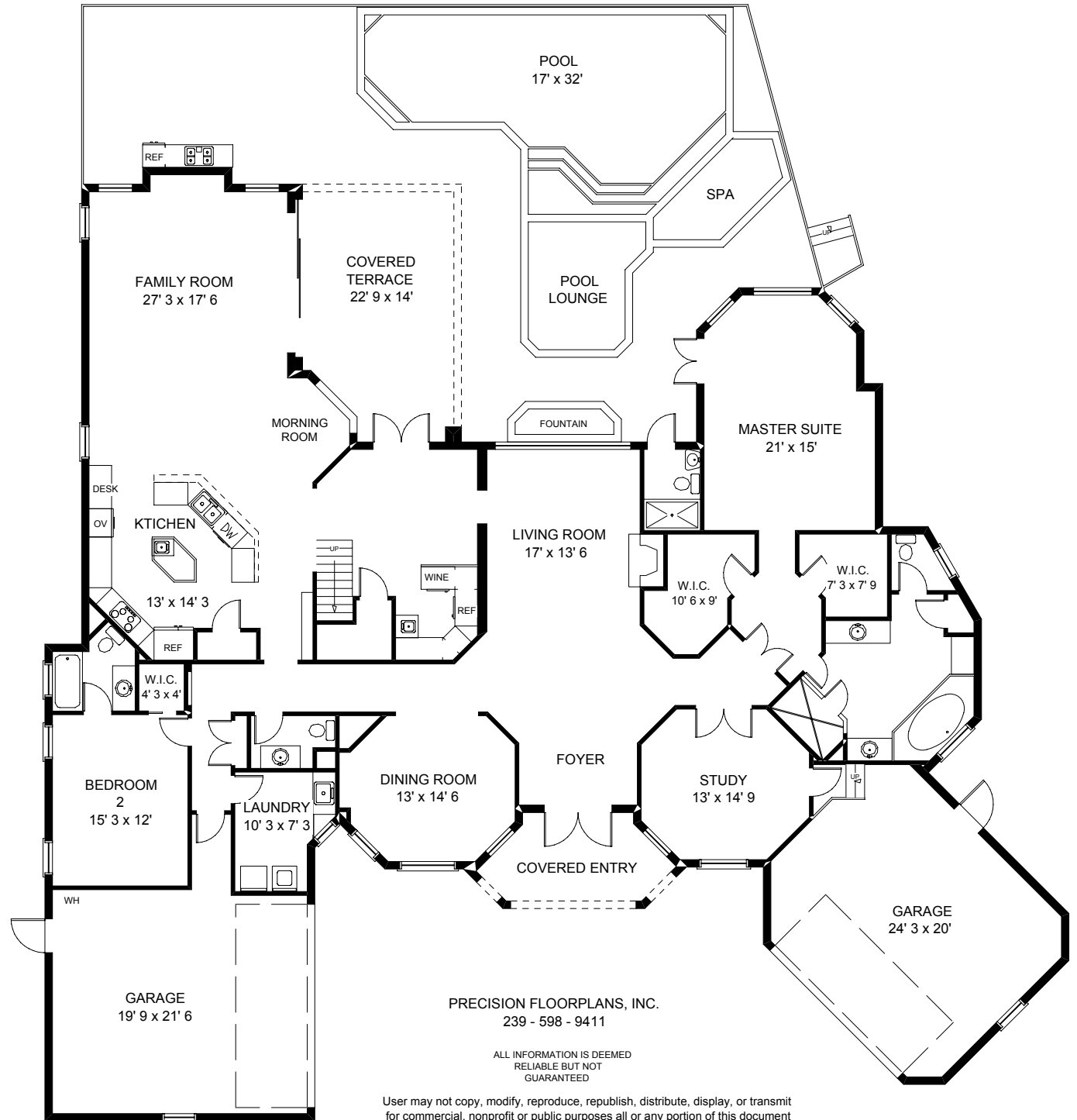
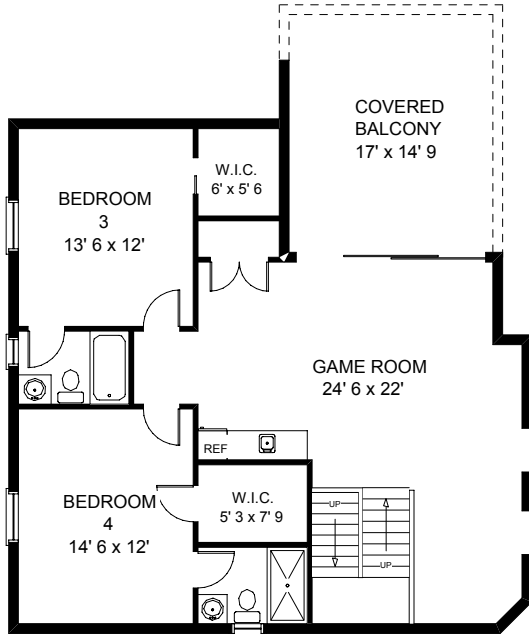


614 BOWLINE DRIVE
NAPLES, FL



Main Living 3464 sq. ft.
Upper Level 1037 sq. ft.

TOTAL UNDER AIR 4501 sq. ft.
Garage(s) 1020 sq. ft.
Covered Entry 120 sq. ft.
Covered Terrace 299 sq. ft.
Covered Balcony 249 sq. ft.

TOTAL UNDER ROOF 6189 sq. ft.
Terrace/Pool 1536 sq. ft.

TOTAL AREA 7725 sq. ft.

PRECISION FLOORPLANS, INC.
239 - 598 - 9411

ALL INFORMATION IS DEEMED
RELIABLE BUT NOT
GUARANTEED

User may not copy, modify, reproduce, republish, distribute, display, or transmit
for commercial, nonprofit or public purposes all or any portion of this document
except to the extent authorized by: Michael Lawler (239) 261-6161